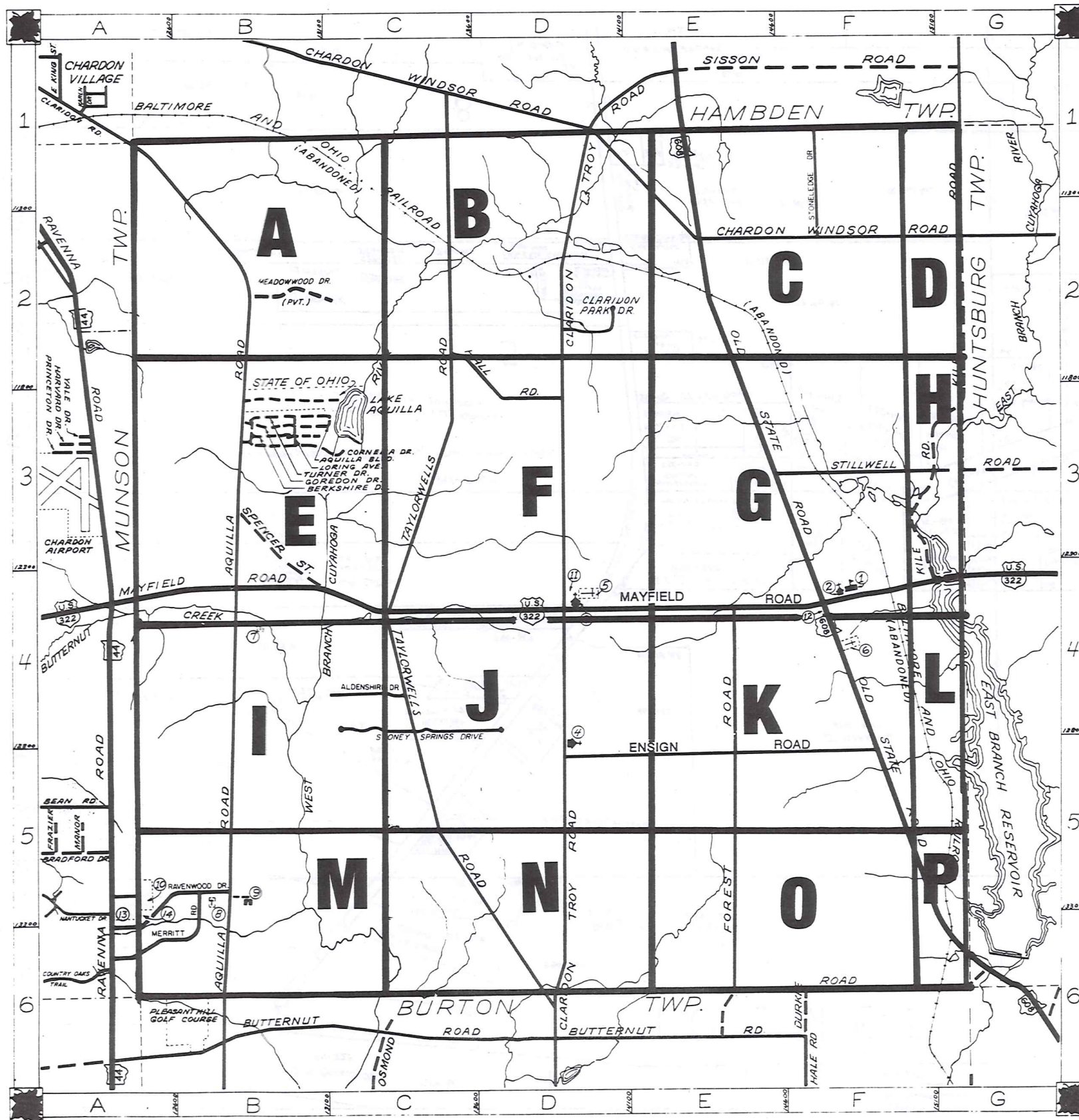


# ROAD INDEX

<b>A</b>	ALDENSHIRE DR C4 AQUILLA BLVD C3 AQUILLA RD. A1-B6	<b>I</b> cont		<b>S</b>	SPENCER ST B3-B4 STILLWELL RD F3-G3 STONELEDGE DR F1-F2 STONE SPRINGS DR C4
<b>B</b>	BERKSHIRE DR B3	<b>J</b>		<b>T</b>	TAYLORWELLS RD. C1-D6 TURNER DR. B3
		<b>K</b>	KILE RD. F4-61		
<b>C</b>	CHARDON WINDSOR RD DI-G2 CLARIDON PARK DR. D2 CLARIDON TROY RD DI-D6 CORNELIA DR B3	<b>L</b>	LORING AVE B3	<b>U</b>	
		<b>M</b>	MAYFIELD RD. A4-G4 MEADOWWOOD DR. B2 MERRITT RD. A6-B5	<b>V</b>	
<b>D</b>	DURKEE RD. F6-G6	<b>N</b>		<b>W</b>	
<b>E</b>	ENSIGN RD D5-F5	<b>O</b>	OLD STATE RD. E1-G6	<b>X</b>	
<b>F</b>	FOREST RD. E4-E6	<b>P</b>		<b>Y</b>	
<b>G</b>	GORDON DR. B3	<b>Q</b>		<b>Z</b>	
<b>H</b>	HALL RD. C2-D3	<b>R</b>	RAVENWOOD DR. A5-B5		

- ① CLARIDON ELEMENTARY SCHOOL
- ② EAST CLARIDON METHODIST CHURCH
- ③ THE FIRST CONGREGATIONAL CHURCH
- ④ CHRISTIAN MISSIONARY ALLIANCE CH.
- ⑤ CLARIDON CENTER CEMETERY
- ⑥ EAST CLARIDON CEMETERY
- ⑦ WEST CLARIDON CEMETERY
- ⑧ GEAGA COUNTY HOME CEMETERY
- ⑨ PLEASANT HILL COUNTY HOME
- ⑩ GEAGA COUNTY COMM. HOSPITAL
- ⑪ CLARIDON TOWN HALL
- ⑫ U.S. POST OFFICE (CLARIDON)
- ⑬ GEAGA COUNTY SAFETY CENTER
- ⑭ GEAGA COUNTY WELFARE DEPT.
- ⑮
- ⑯



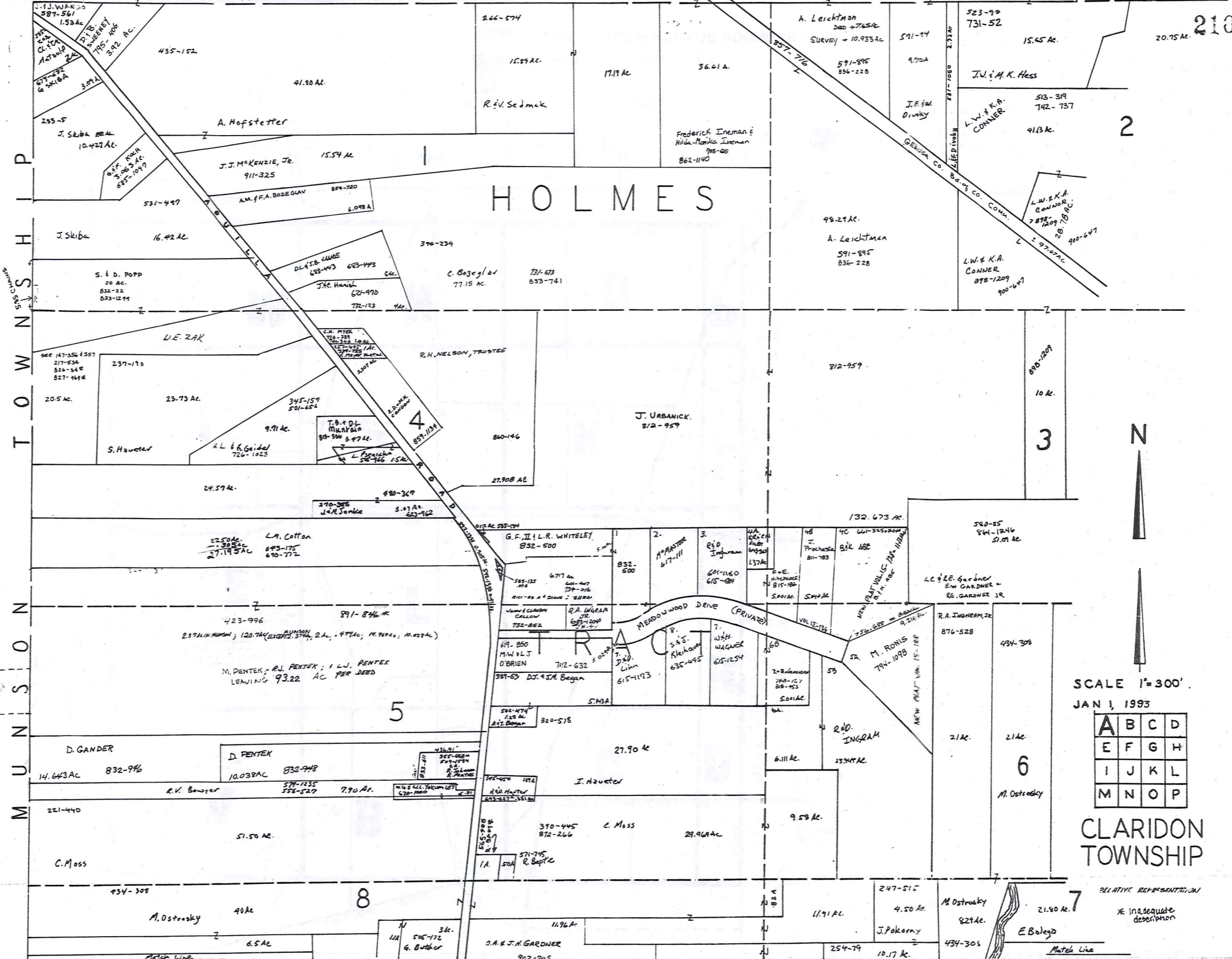
UNPAVED ROAD      RAILROAD  
 PAVED ROAD      TOWNSHIP LINE

## LEGEND

A ... INDICATES MAP PAGE  
 ... INDICATES MAP PAGE BOUNDARY

INDEX MAP OF  
**CLARIDON TOWNSHIP**  
 GEAGA COUNTY, OHIO

H A M B D E N T O W N S H I P



210

2

3

5

6

8

7



SCALE 1"=300'  
JAN 1, 1993

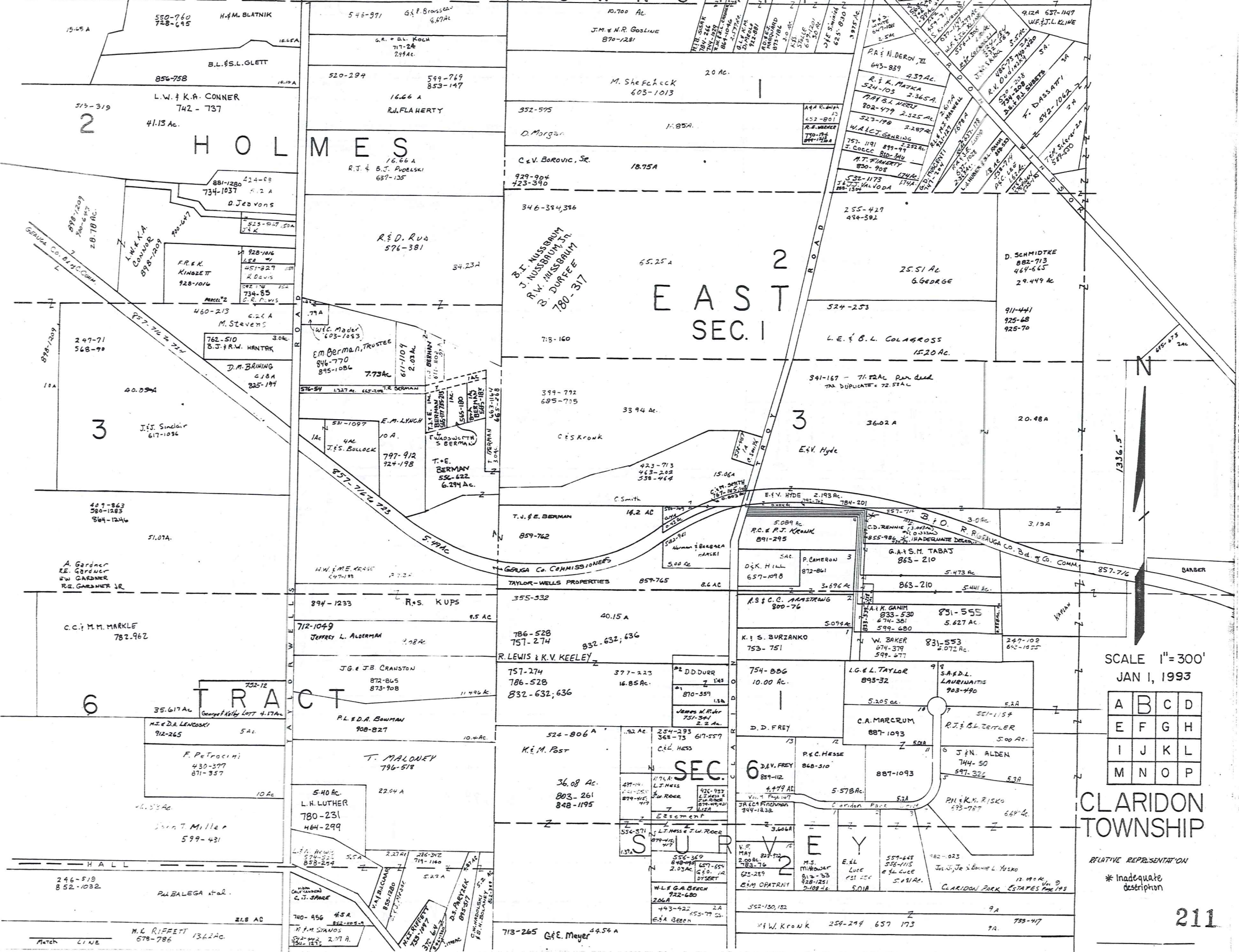
A	B	C	D
E	F	G	H
I	J	K	L
M	N	O	P

CLARIDON TOWNSHIP

RELATIVE REPRESENTATION  
\* Inadequate description

TRW-REDI SCALE IN 1/10 OF AN INCH 1-800-345-7334

H A M B U R G T O W N S H I P



TRW-REDI SCALE IN 1/10 OF AN INCH

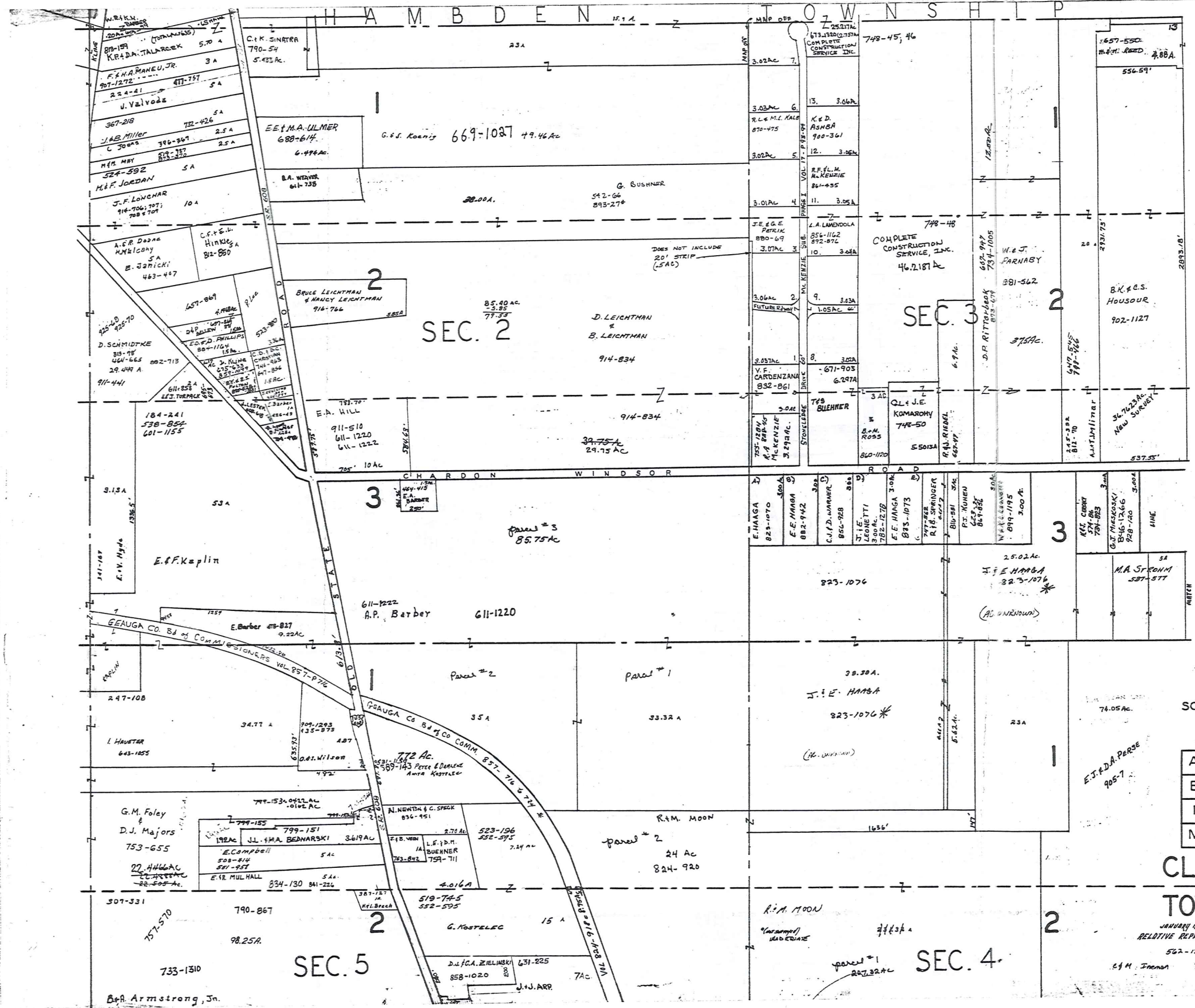
1-800-345-7334

SCALE 1"=300'  
JAN 1, 1993

A	B	C	D
E	F	G	H
I	J	K	L
M	N	O	P

CLARIDON TOWNSHIP

RELATIVE REPRESENTATION  
\* Inadequate description



TRW-REDI SCALE IN 1/10 OF AN INCH

1-800-345-7334



SCALE 1" = 300'

A	B	C	D
E	F	G	H
I	J	K	L
M	N	O	P

CLARIDON TOWNSHIP

JANUARY 1, 1995  
RELATIVE REPRESENTATION

562-127  
E.J. F. D.A. Perse  
\* Inadequate description

SEC. 2

SEC. 3

3

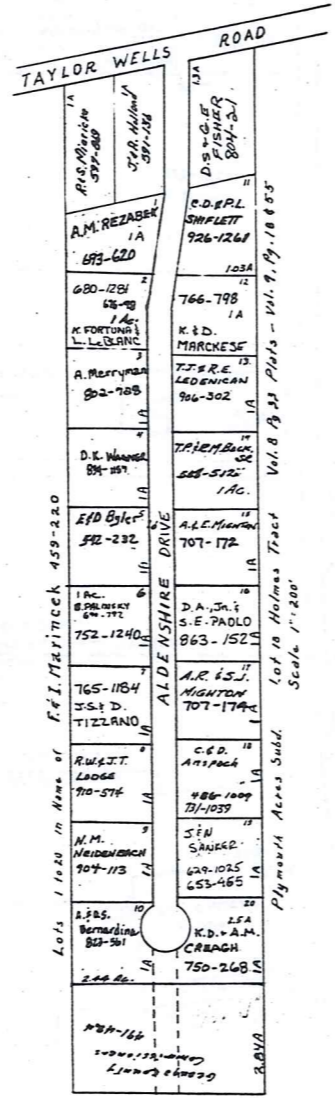
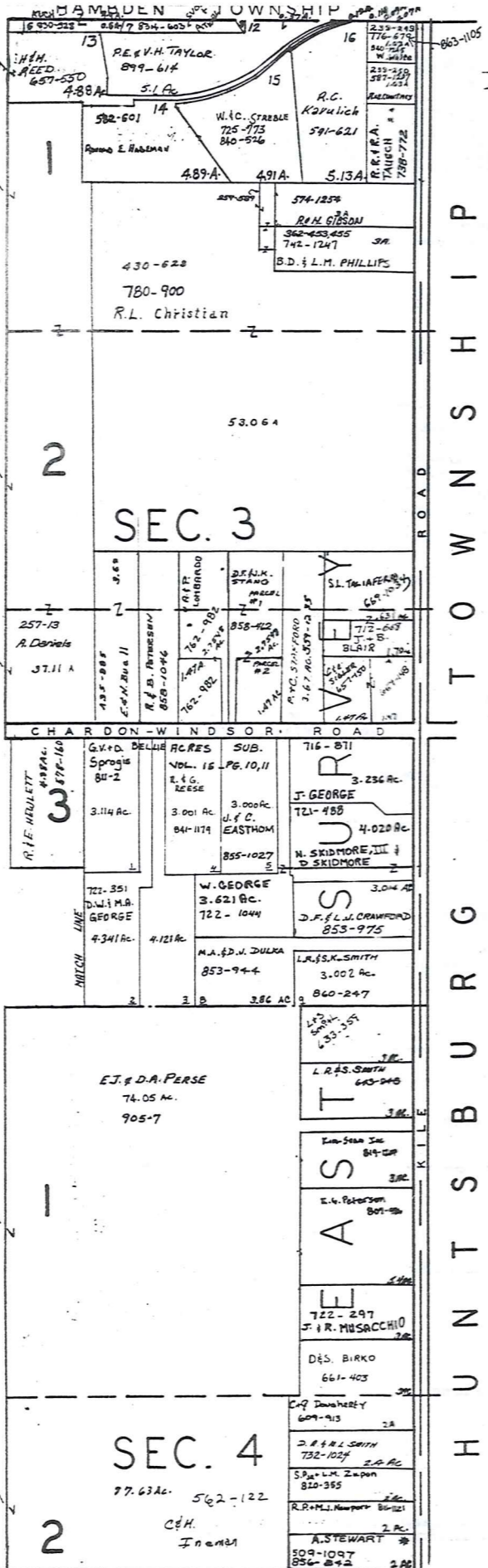
3

2

2

SEC. 4

SEC. 5



T O W N S H I P  
R O A D  
C H A R D O N - W I N D S O R R O A D  
M I T C H L I N E  
T O W N S H I P  
R O A D  
C H A R D O N - W I N D S O R R O A D  
M I T C H L I N E



SCALE 1"=300'

\* Inadequate description  
JANUARY 1, 1993  
RELATIVE REPRESENTATION

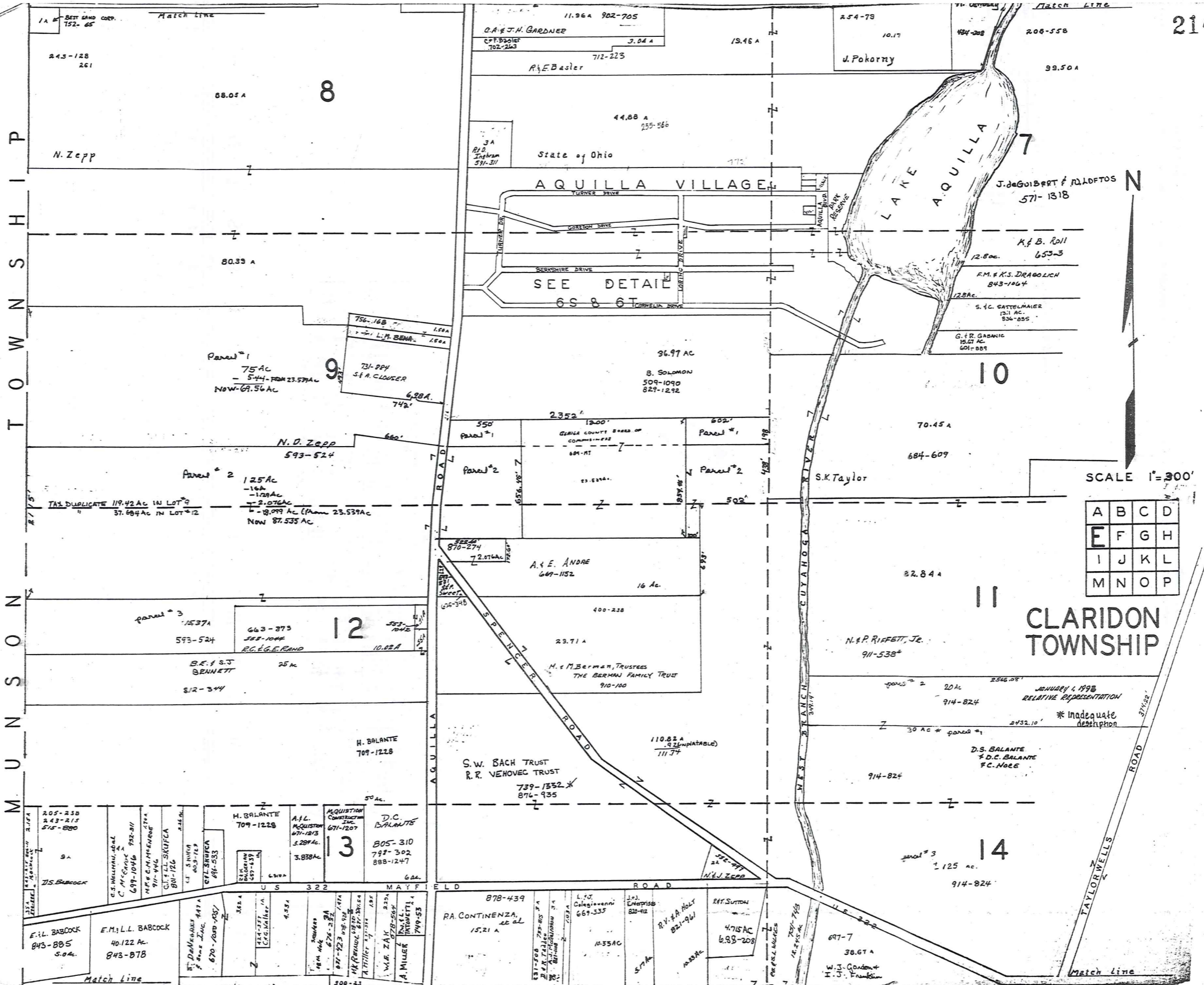
A	B	C	D
E	F	G	H
I	J	K	L
M	N	O	P

CLARIDON TOWNSHIP 213

TRW-REDI SCALE IN 1/10 OF AN INCH



1-800-345-7334



MUNISONSOTOWNSHIP

214

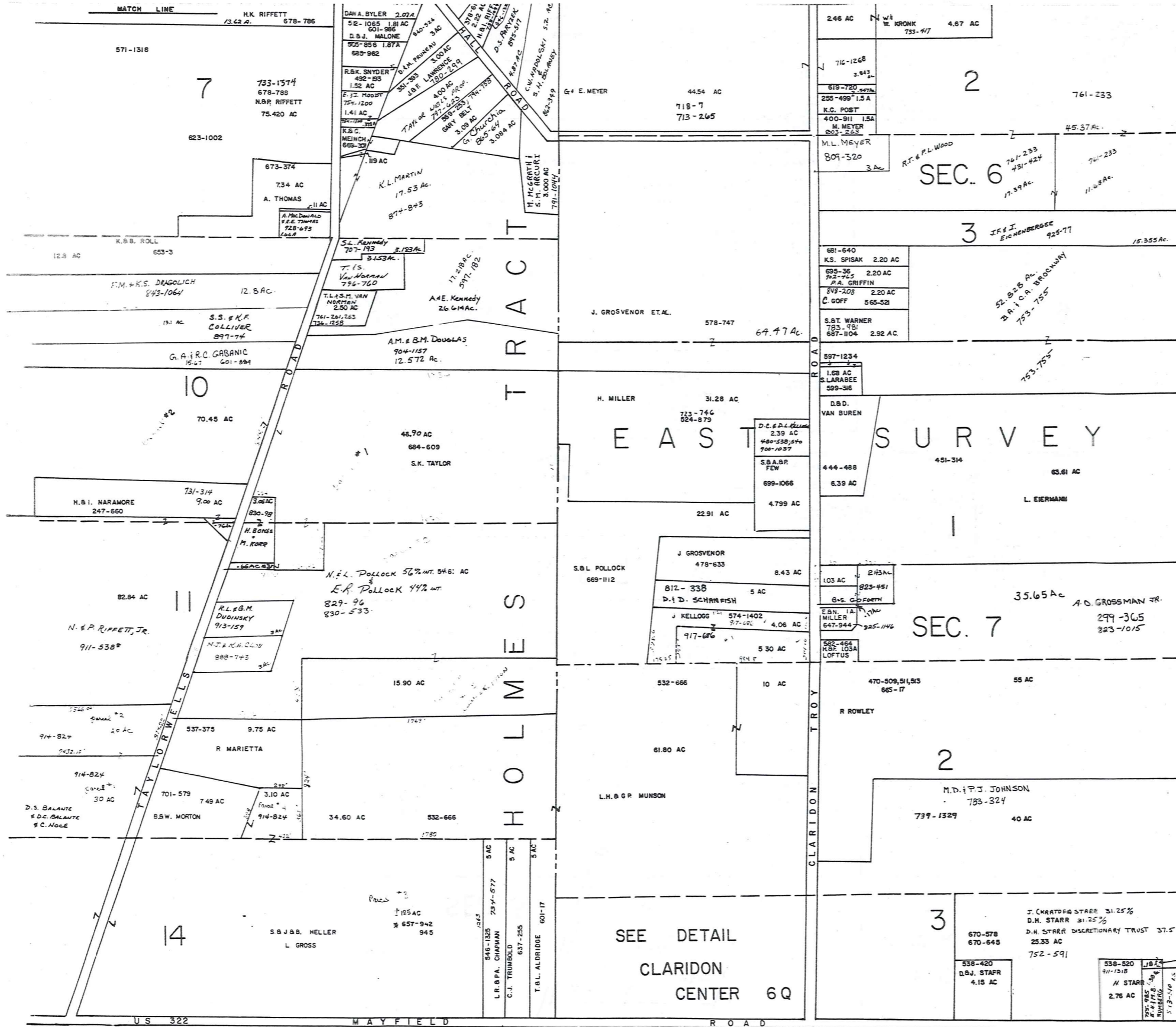


SCALE 1"=300'

A	B	C	D
E	F	G	H
I	J	K	L
M	N	O	P

**CLARIDON TOWNSHIP**

TRW-REDI SCALE IN 1/10 OF AN INCH 1-800-345-7334



A	B	C	D
E	F	G	H
I	J	K	L
M	N	O	P

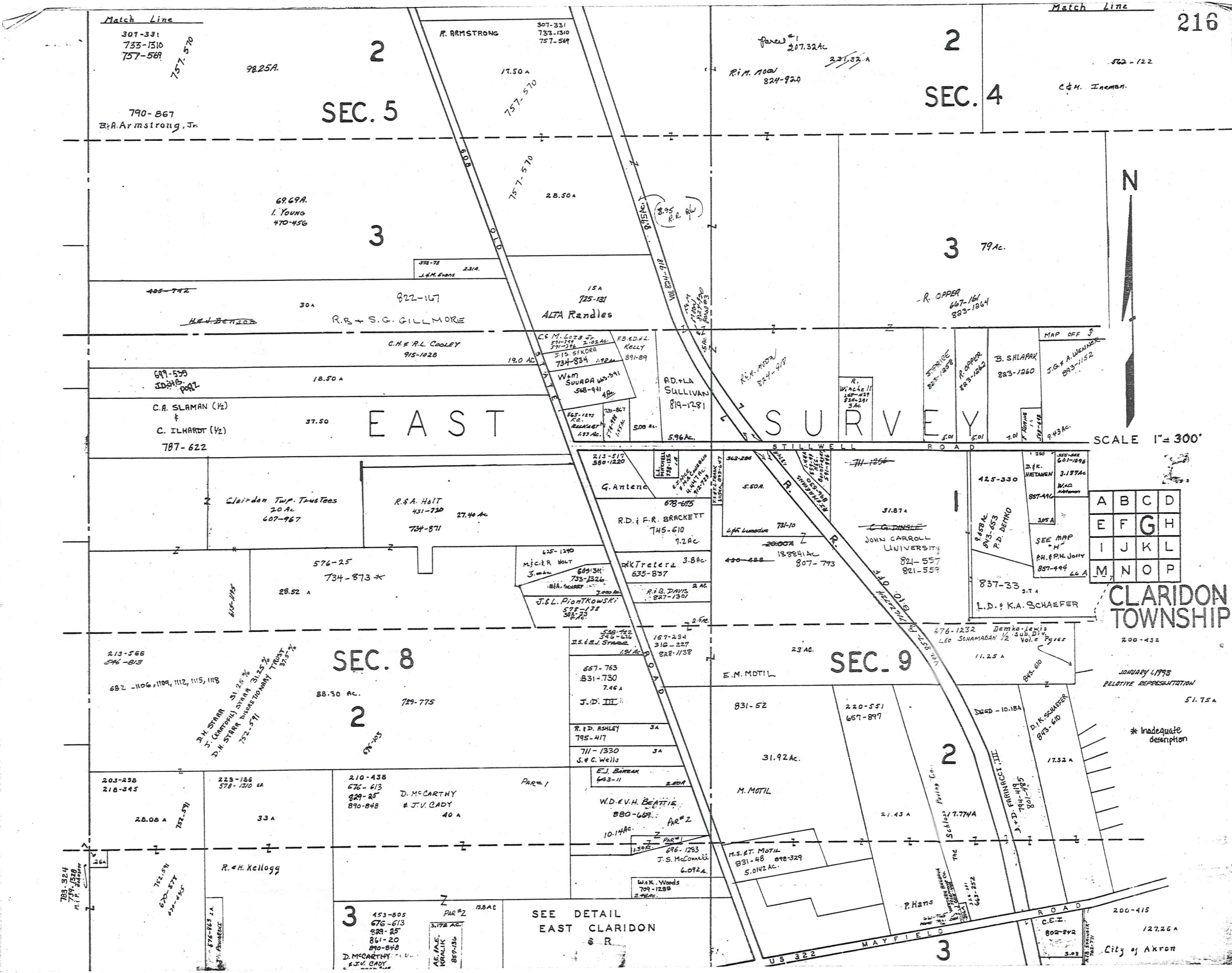
CLARIDON TOWNSHIP

JANUARY 1, 1943  
L. LATHROP REPRESENTATION

\* Inadequate description

D.H. STARR  
900-440  
524-811  
911-1318

TRW-REDI SCALE IN 1/10 OF AN INCH 1-800-345-7334



216

SEC. 4

SEC. 5

3

3

EAST

SURVEY

SEC. 8

SEC. 9

CLARIDON TOWNSHIP

SCALE 1" = 300'

A	B	C	D
E	F	G	H
I	J	K	L
M	N	O	P

JANUARY 1, 1973  
RELATIVE REPRESENTATION

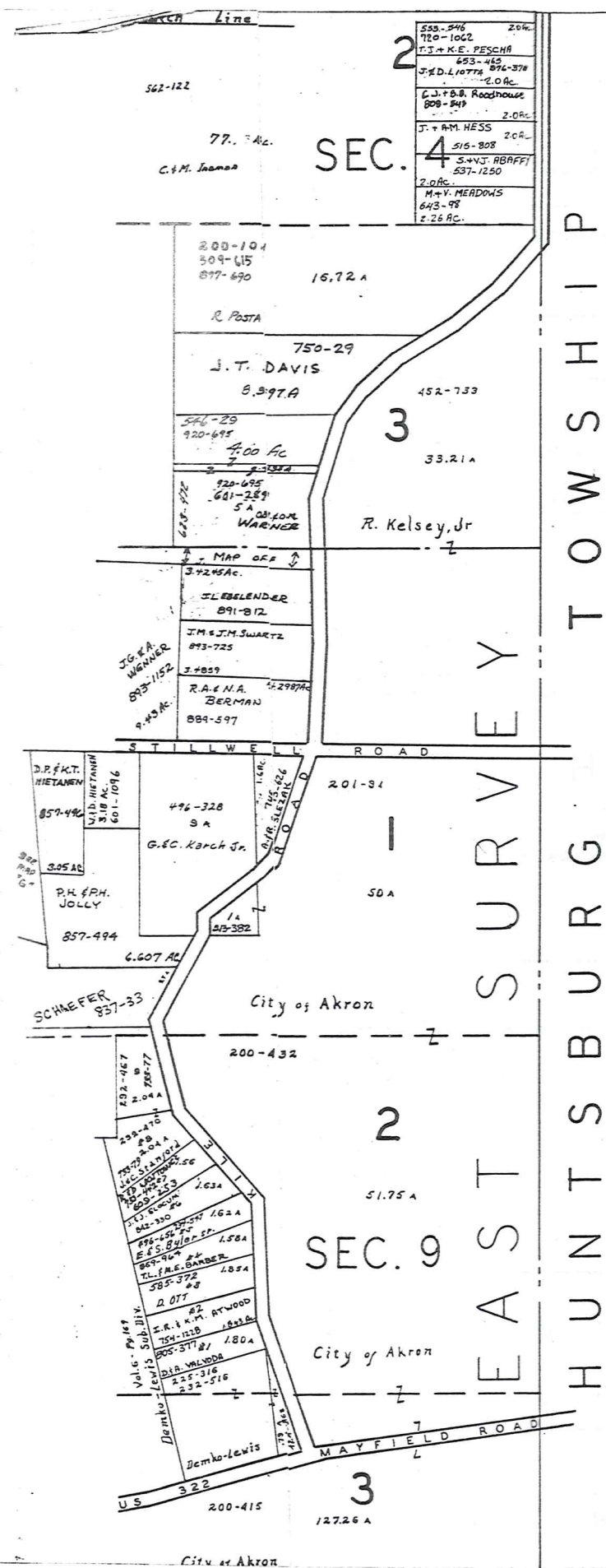
\* Inadequate description

SEE DETAIL  
EAST CLARIDON  
6 R

TRW-REDI  
SCALE IN 1/10 OF AN INCH

1-800-345-7334

City of Akron



HUNTSBURG TOWNSHIP

EAST SURVEY

TRW-REDI SCALE IN 1/10 OF AN INCH 1-800-345-7334



SCALE 1"=300'

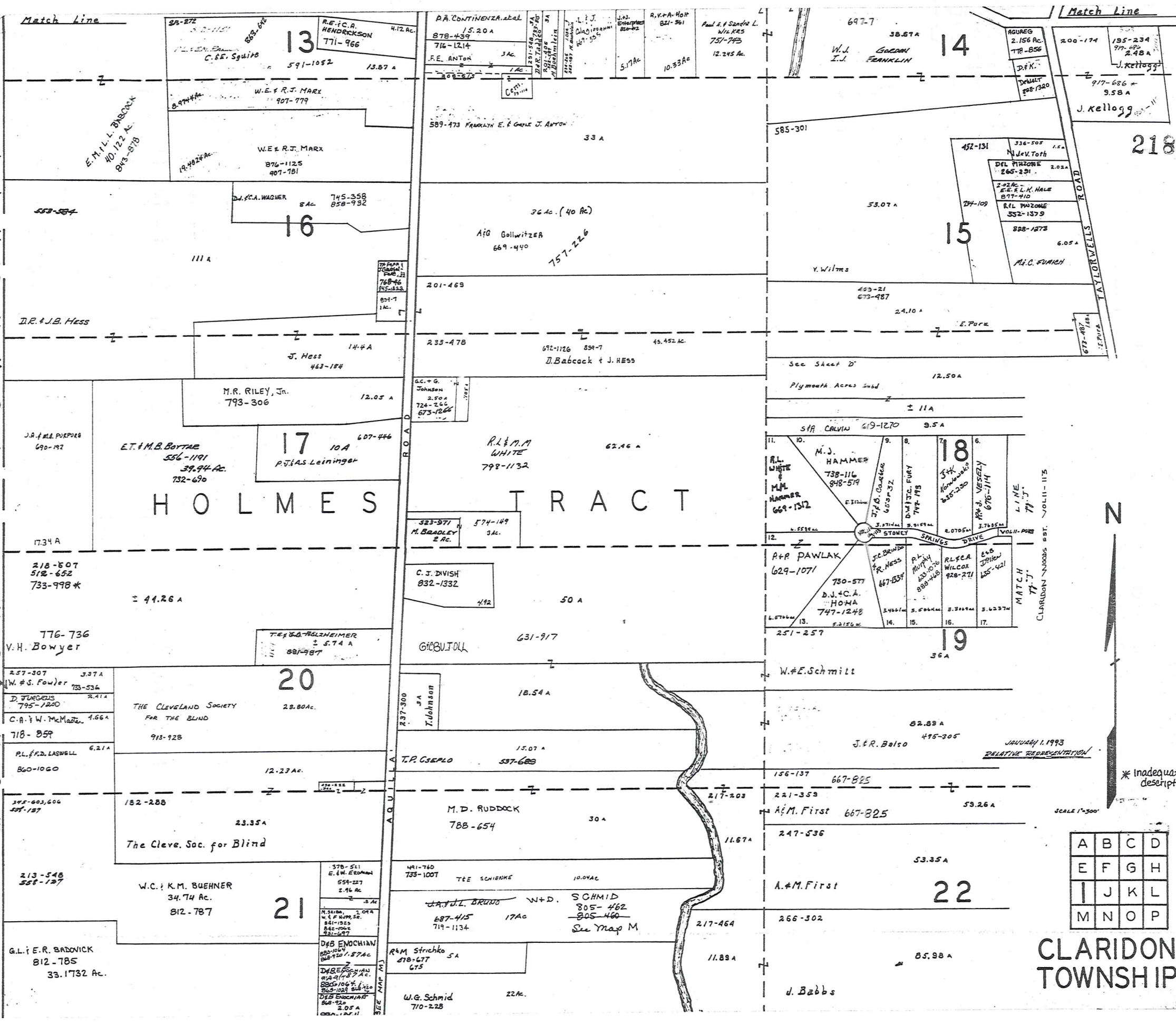
A	B	C	D
E	F	G	H
I	J	K	L
M	N	O	P

CLARIDON TOWNSHIP 217

JANUARY 1993  
RELATIVE REPRESENTATION

\* Inadequate description

P  
S  
H  
I  
P  
T  
O  
W  
N  
S  
H  
I  
P  
T  
O  
W  
N  
S  
H  
I  
P  
T  
O  
W  
N  
S  
H  
I  
P



# H O L M E S T R A C T

CLARIDON TOWNSHIP

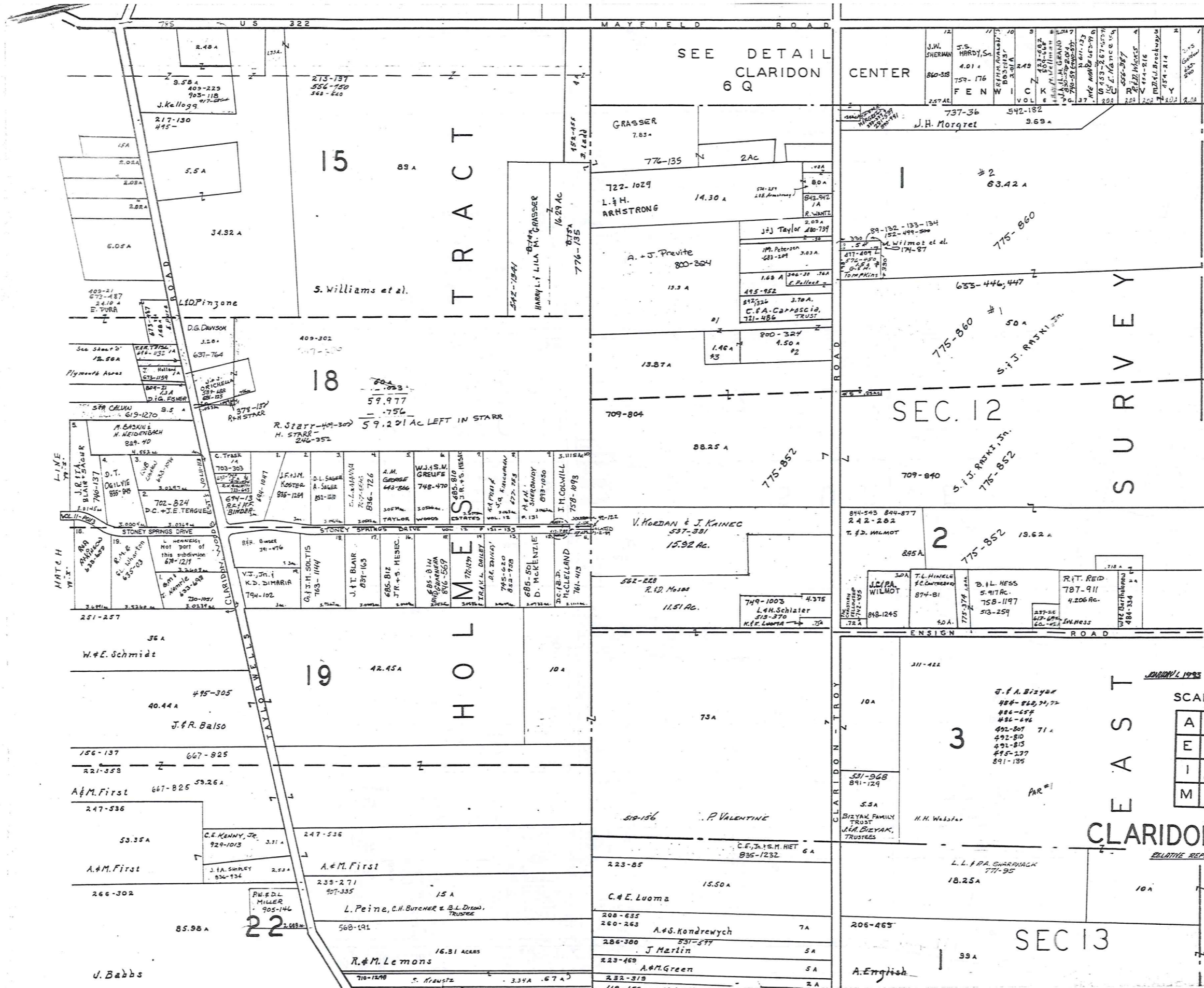
A	B	C	D
E	F	G	H
I	J	K	L
M	N	O	P

TRW-REDI SCALE IN 1/10 OF AN INCH 1-800-345-7334

\* Inadequate description

SCALE 1"=300'

JANUARY 1, 1993  
RELATIVE REPRESENTATION



SEE DETAIL  
CLARIDON  
6 Q

CENTER

TRACT

S U R V E Y

H O L M E

E A S T

CLARIDON TWP.

A	B	C	D
E	F	G	H
I	J	K	L
M	N	O	P



TRW-REDI SCALE IN 1/10 OF AN INCH

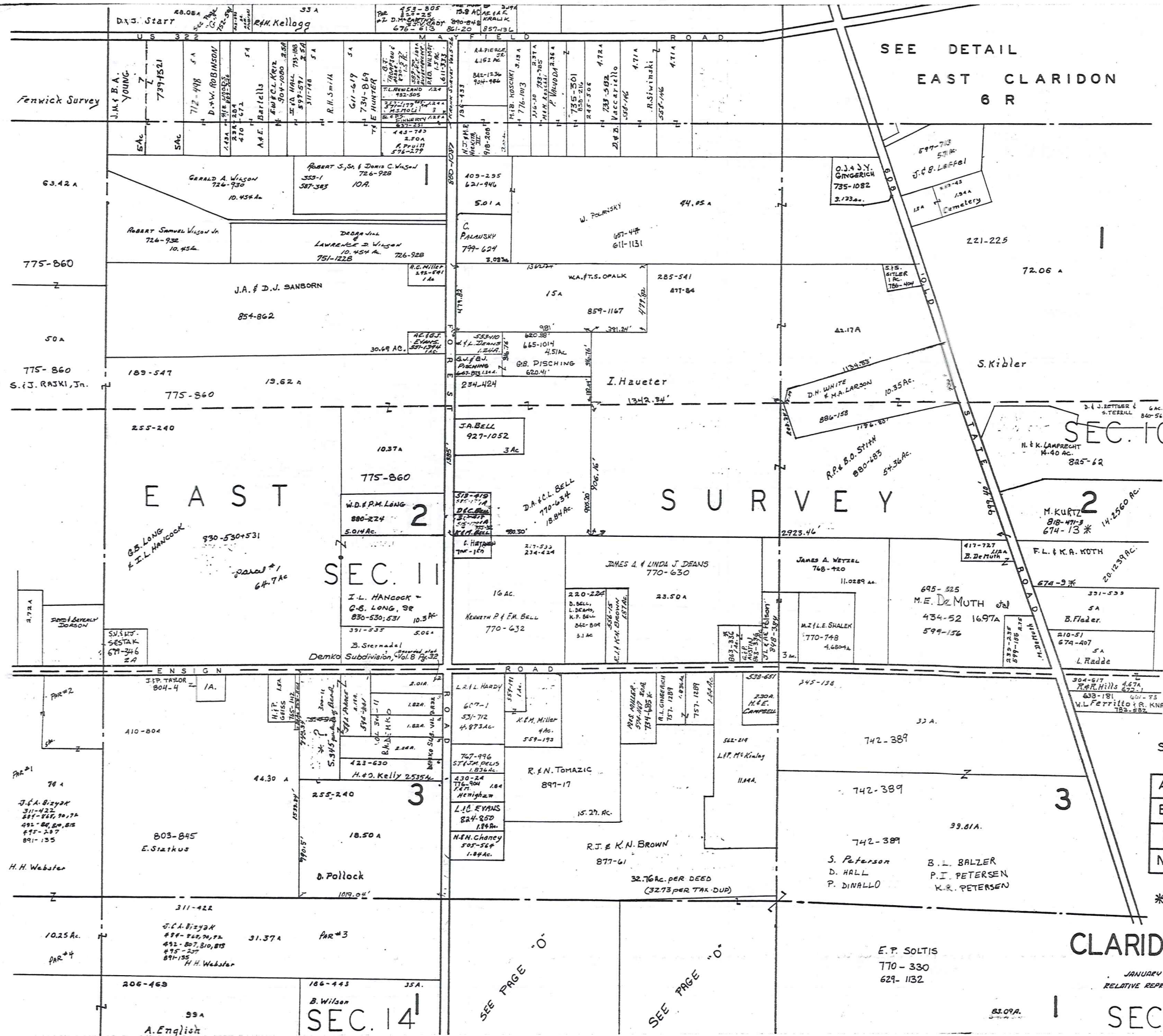
1-800-345-7334

SCALE 1"=300'

RELATIVE REPRESENTATION

\*Inadequate description

219



SEE DETAIL  
EAST CLARIDON  
6 R

E A S T

S U R V E Y

SEC. 11

SEC. 10

A	B	C	D
E	F	G	H
I	J	K	L
M	N	O	P

SCALE 1"=300'

CLARIDON TWP.

JANUARY 1, 1993  
RELATIVE REPRESENTATION

SEC. 15

TRW-REDI  
SCALE IN 1/10 OF AN INCH

1-800-345-7334

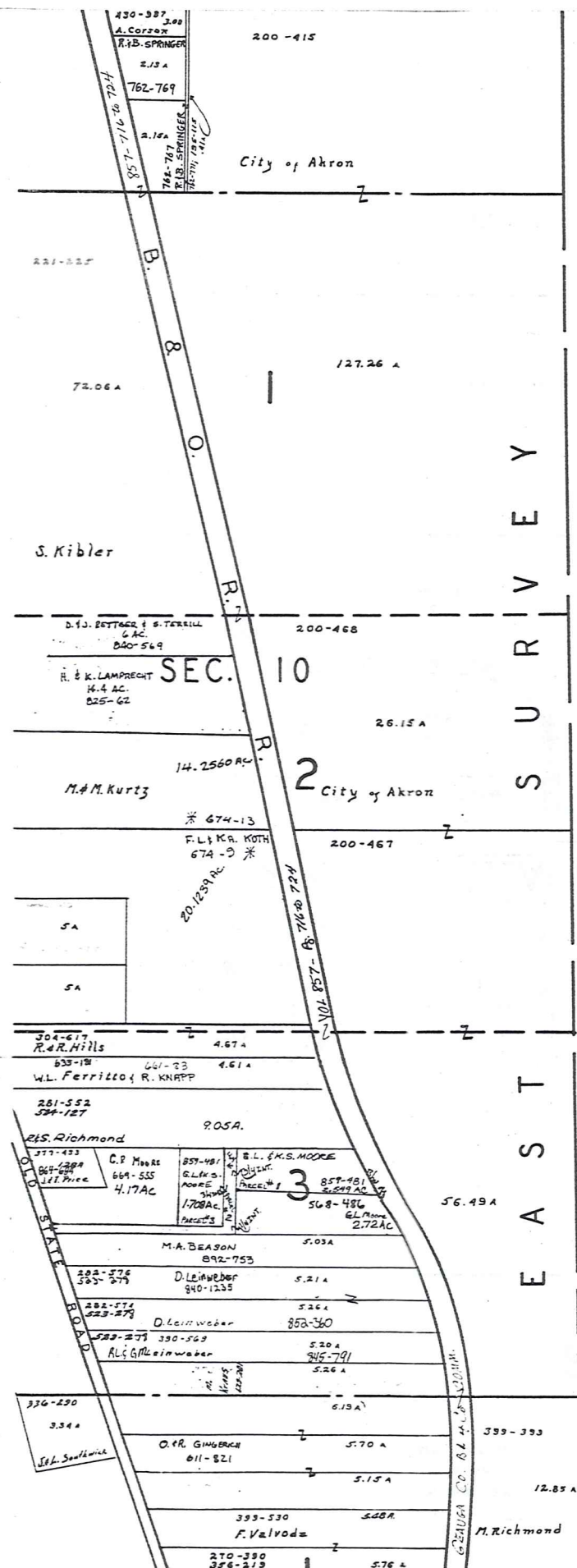
\* Inadequate description

SEE PAGE "O"

SEE PAGE "O"

SEC. 14

83.09A



HUNTSBURG TOWNSHIP  
 SURVEY  
 EAST

TRW·REDI SCALE IN 1/10 OF AN INCH 1-800-345-7334



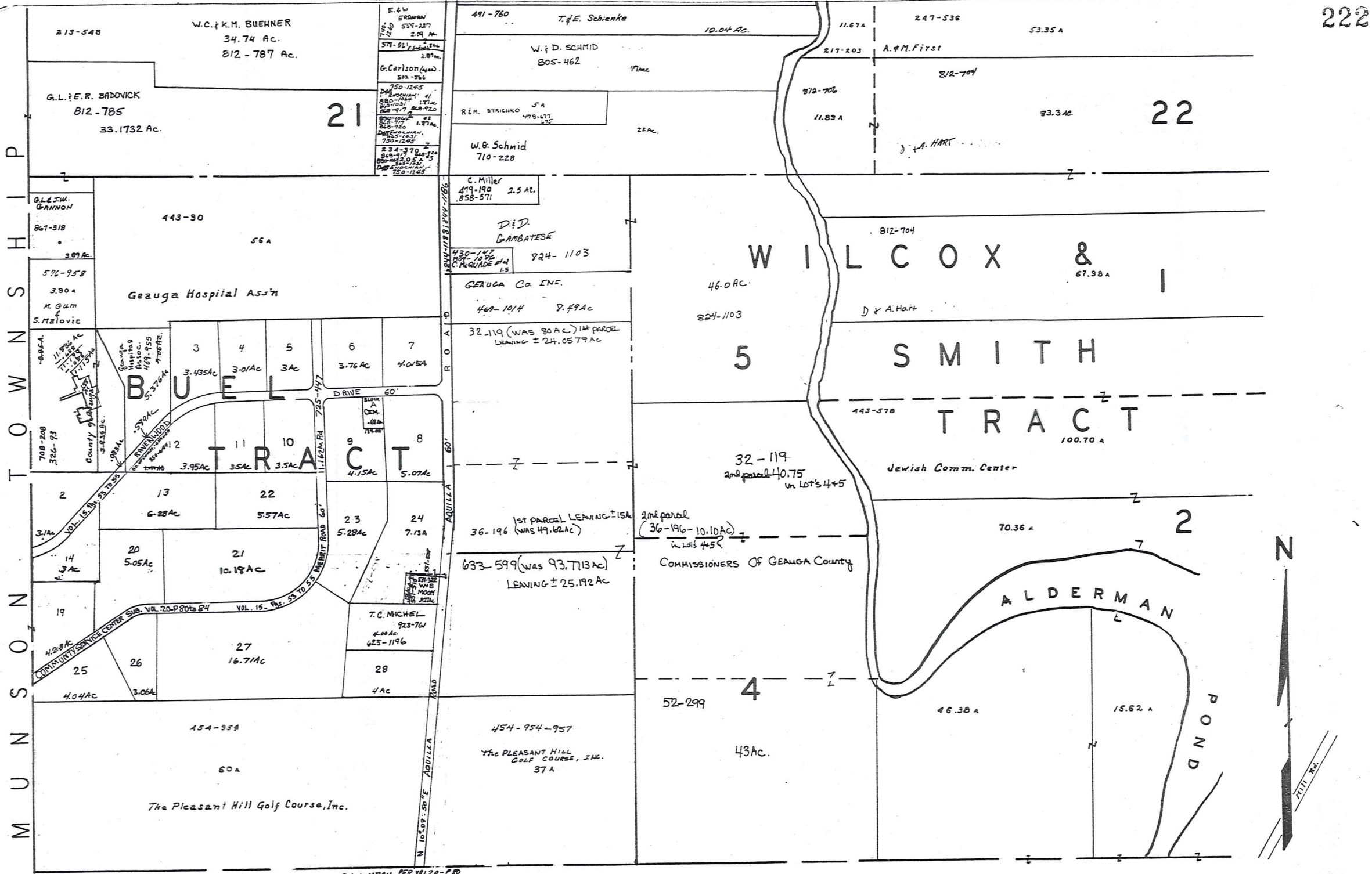
\* Inadequate description

SCALE 1" = 300'

A	B	C	D
E	F	G	H
I	J	K	L
M	N	O	P

221  
CLARIDON TWP.

JANUARY 1, 1993  
RELATIVE REPRESENTATION



MUNSON TOWNSHIP

BURTON TOWNSHIP

222

TRW-REDI SCALE IN 1/10 OF AN INCH



1-800-345-7334

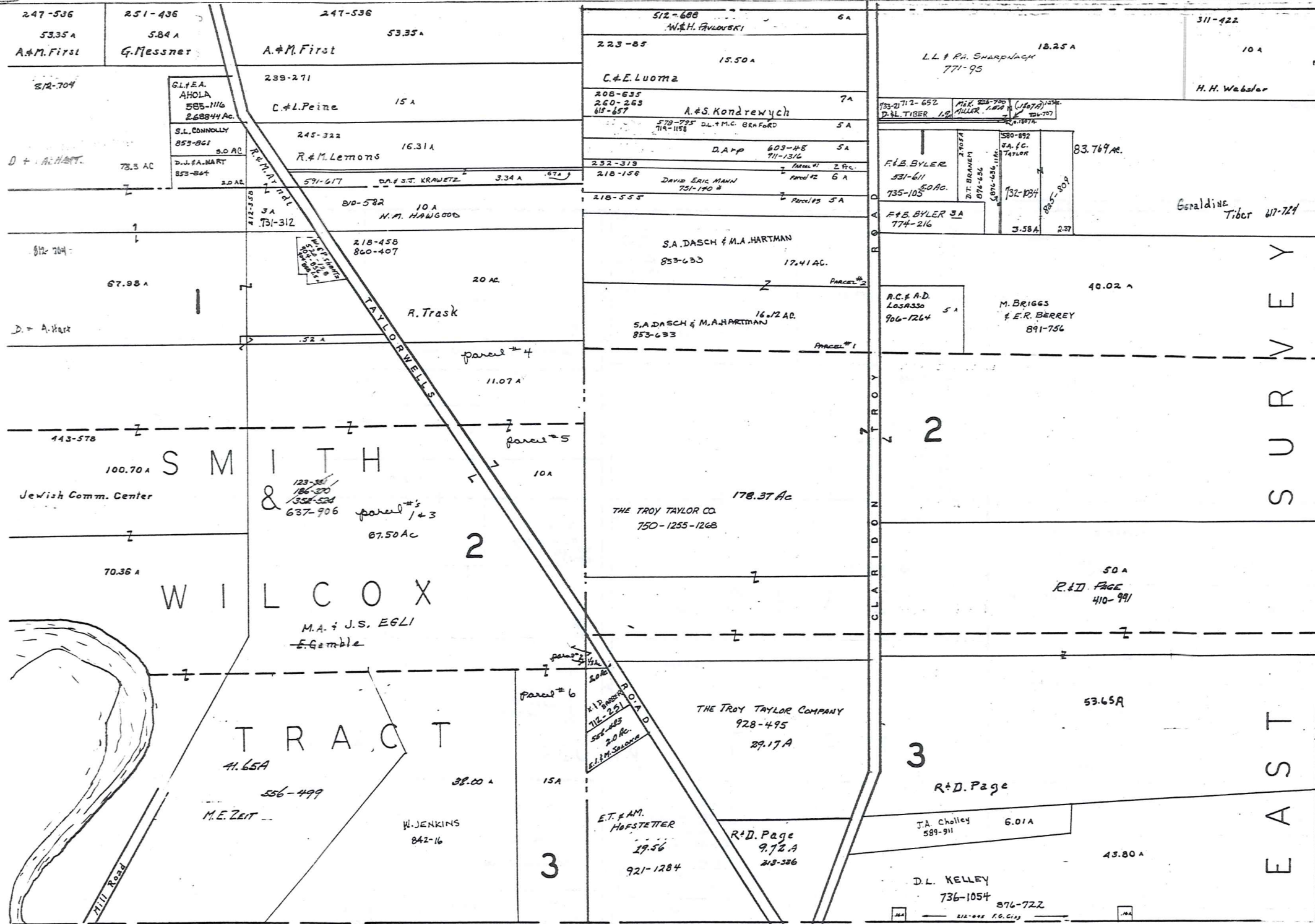
SCALE 1" = 300'

JANUARY 1, 1993  
RELATIVE REPRESENTATION

\* Inadequate description

A	B	C	D
E	F	G	H
I	J	K	L
M	N	O	P

CLARIDON TWP



TRW-REDI  
 SCALE IN 1/10 OF AN INCH  
 1-800-345-7334



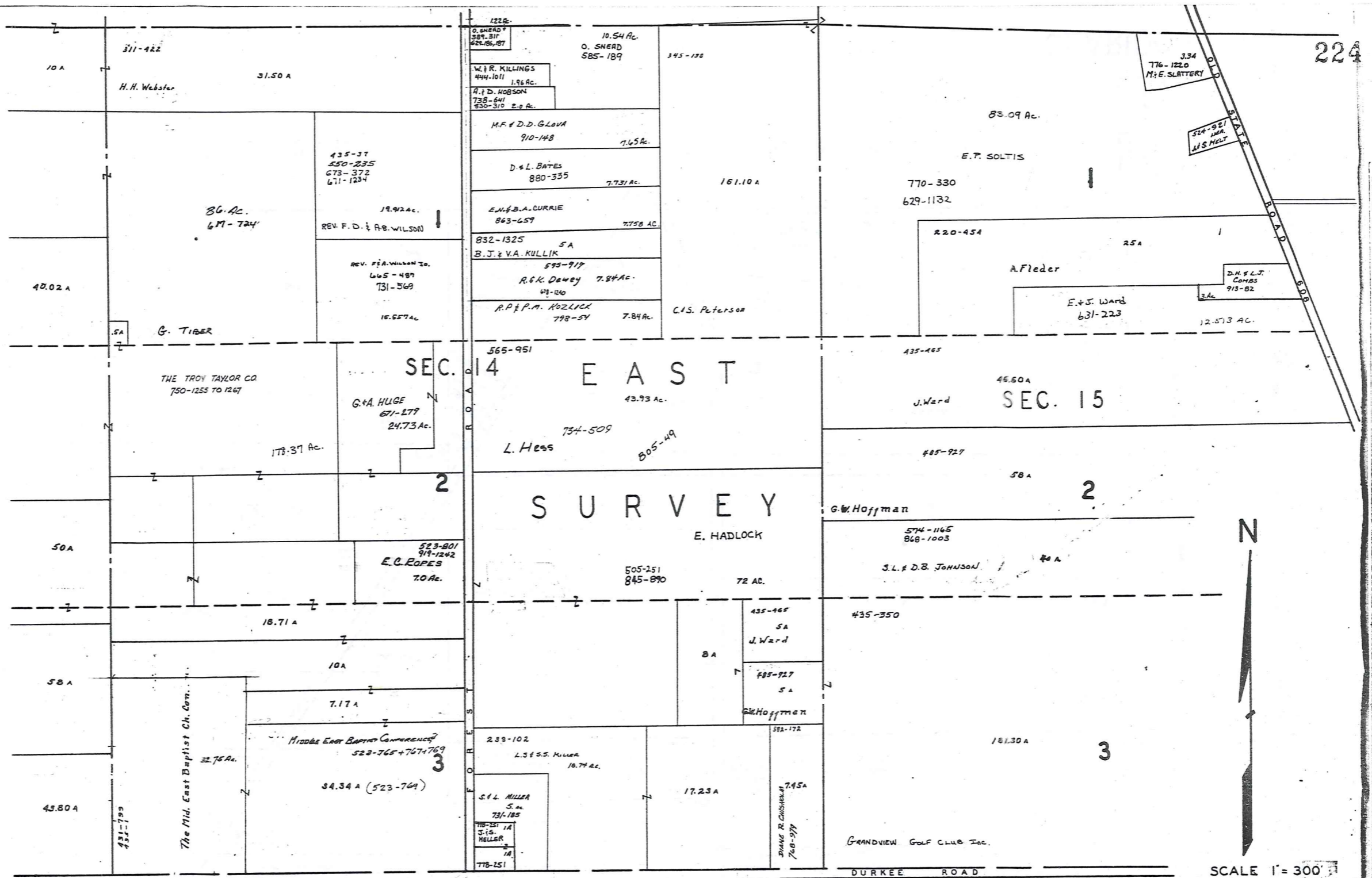
SCALE 1" = 300'

\* Inadequate description

BURTON TOWNSHIP

A	B	C	D
E	F	G	H
I	J	K	L
M	N	O	P

CLARIDON TWP  
 223  
 JANUARY 1, 1973  
 RELATIVE REPRESENTATION



224

TRW-REDI SCALE IN 1/10 OF AN INCH

1-800-345-7334

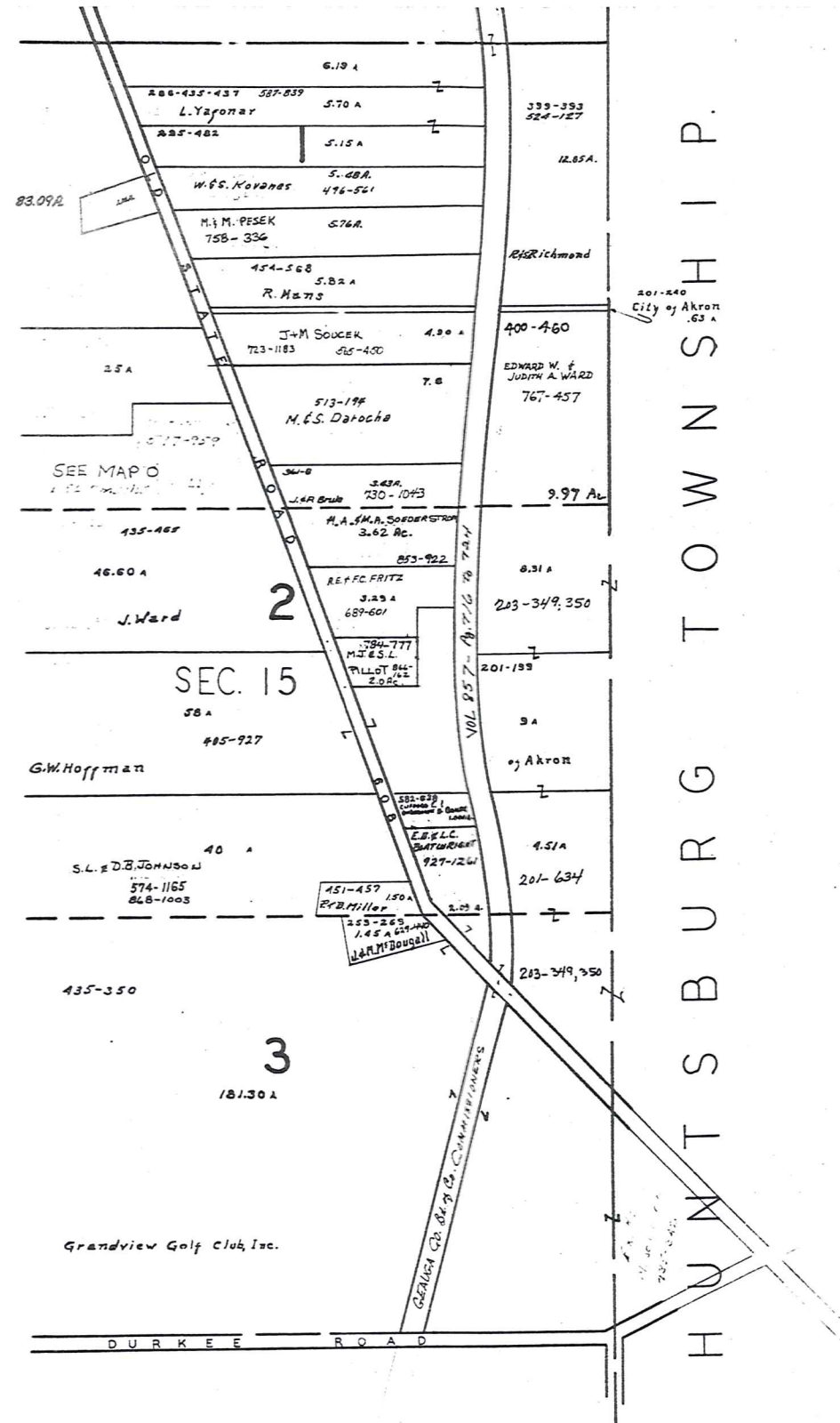
SCALE 1" = 300'

A	B	C	D
E	F	G	H
I	J	K	L
M	N	O	P

\* Inadequate description

CLARIDON TWP.

JANUARY 1, 1993  
RELATIVE REPRESENTATION



BURTON TWP.

HUNTTSBURG TOWNSHIP.



SCALE 1" = 300'

A	B	C	D
E	F	G	H
I	J	K	L
M	N	O	P

\* Inadequate description

JANUARY 1, 1993  
RELATIVE REPRESENTATION

225  
CLARIDON TWP.

TRW-REDI SCALE IN 1/10 OF AN INCH

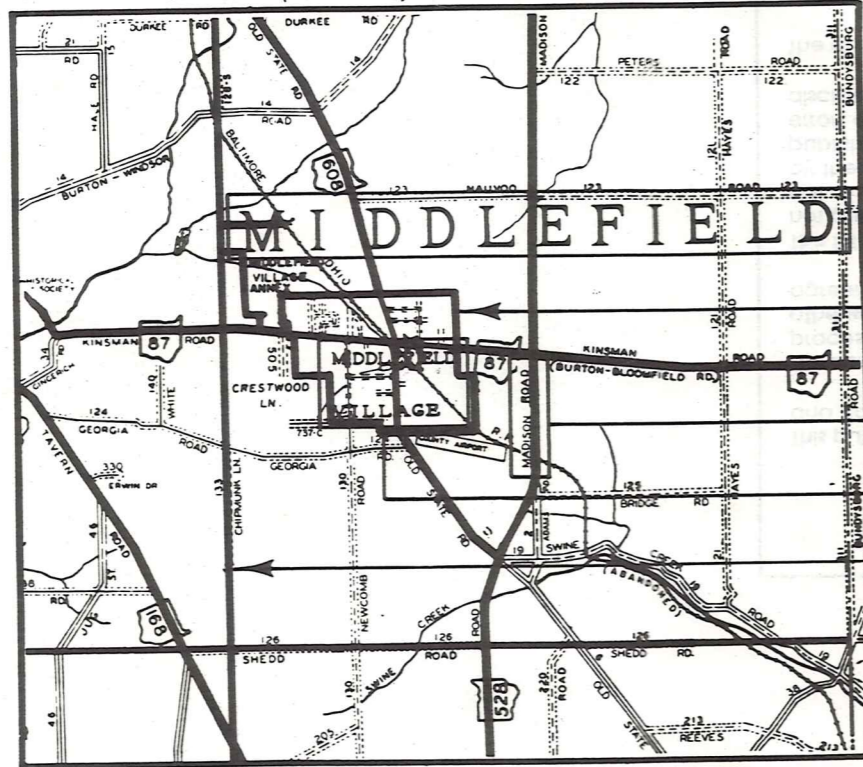


1-800-345-7334

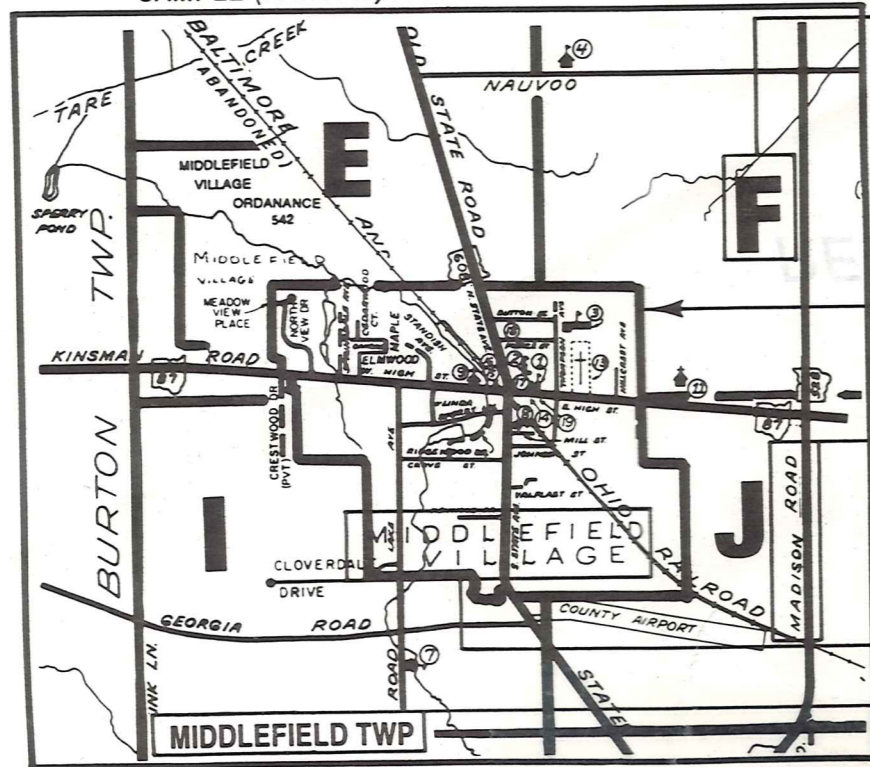
# Explanation and Use Sheet for Geauga County, Ohio

A

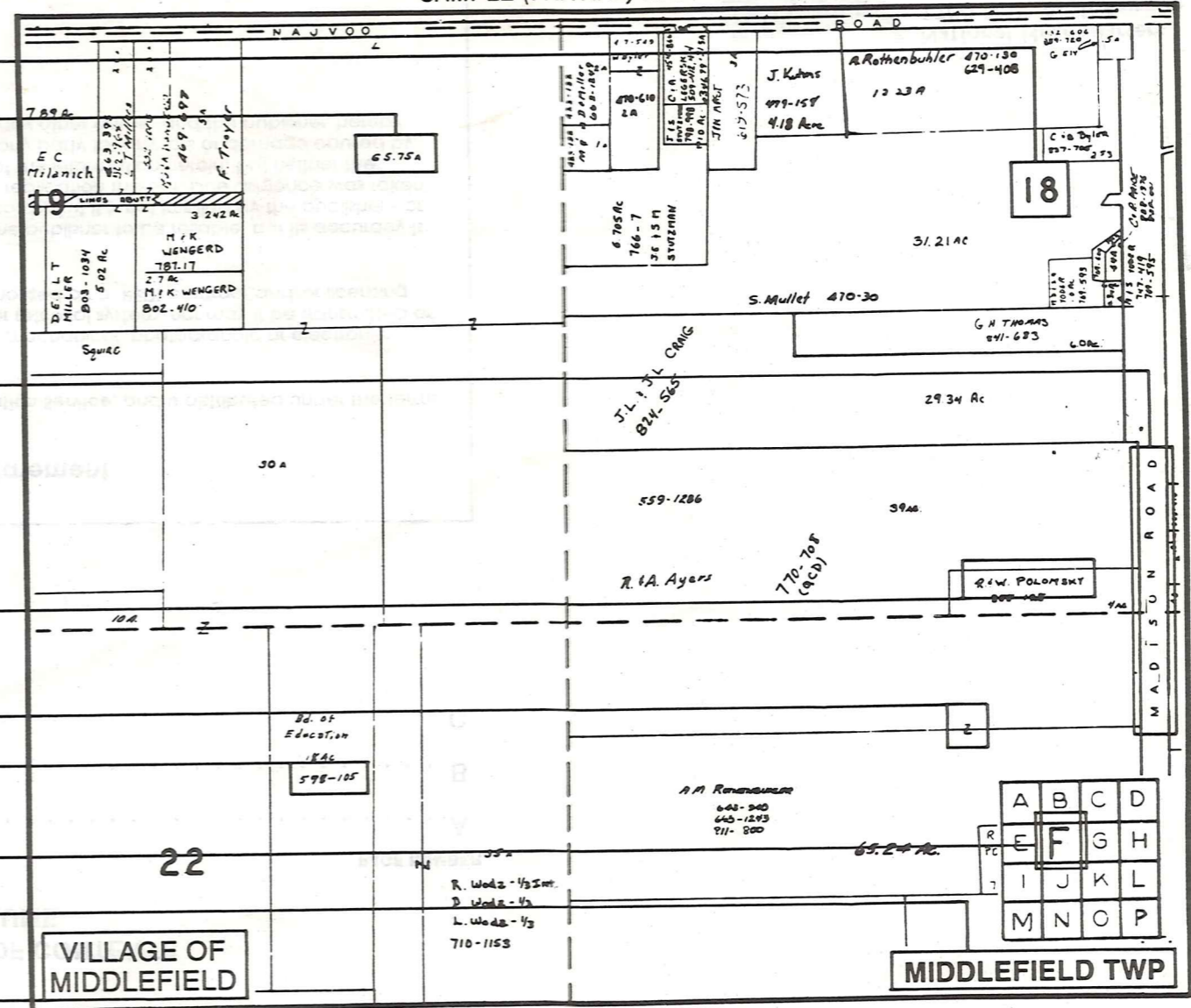
SAMPLE (PARTIAL) COUNTY INDEX MAP



SAMPLE (PARTIAL) MUNICIPALITY INDEX MAP



SAMPLE (PARTIAL) MAP PAGE



- Tract Lot Number
- Acreage
- Township Name
- Village Boundary
- Street Name
- Village Name
- Township Boundary
- Owners Name
- Denotes Continuous Ownership
- Deed Book & Page
- Map Page Number
- Township Name
- Village Name

- Village Boundary
- Street Name
- Village Name
- Township Name

### USE OF THE MAP VOLUME

1. LOCATE THE GENERAL AREA OF INTEREST ON THE COUNTY INDEX MAP AND NOTE THE MUNICIPALITY NAME (TOWNSHIP OR VILLAGE).
  2. REFER TO THE TABLE OF CONTENTS AND NOTE THE BEGINNING ATLAS PAGE NUMBER FOR THE MUNICIPALITY OF INTEREST.
  3. TURN TO THE PAGE INDICATED, ON THIS PAGE WILL APPEAR AN INDEX MAP FOR THAT MUNICIPALITY.
  4. LOCATE THE GENERAL AREA OF INTEREST AND NOTE THE MAP PAGE NUMBER. THIS MAY BE EITHER A LETTER OR A NUMBER.
  5. MAP PAGES ARE IN ALPHABETICAL (OR NUMERICAL) SEQUENCE FOLLOWING THE MUNICIPALITY INDEX MAP. FOLLOW SEQUENCE TO THE MAP PAGE INDICATED.
  6. LOCATE SPECIFIC PARCEL OF INTEREST AND NOTE THE DESIRED INFORMATION.
- NOTE: ON SOME MAPS YOU MAY BE REFERRED TO A DETAIL SHEET SHOWING AN ENLARGEMENT OF THE AREA. THESE MAPS ARE FOUND AT THE END OF THE REGULAR MAP PAGES IN EACH MUNICIPALITY IN EITHER ALPHABETICAL OR NUMERICAL SEQUENCE.
- NOTE: CHARDON VILLAGE HAS TITLE SHEETS. TO LOCATE OWNERS NAME, NOTE THE PARCEL NUMBER, REFER TO THE TITLE PAGE FOLLOWING THE MAP OF INTEREST, FOLLOW NUMERICAL SEQUENCE TO THE PARCEL NUMBER OF INTEREST AND NOTE THE DESIRED INFORMATION. IN ALL OTHER MUNICIPALITIES THE OWNERS NAME APPEARS ON THE MAP PAGE.